

# STAINLESS STEEL TB CONDUIT BODIES

## Features:

- Manufactured in type 316 stainless steel to meet any stringent sanitary condition
- Polished with standard “brite” finish to increase corrosion resistance and aesthetic appearance
- Solid stainless construction permits easy installation using ordinary hand tools
- The flat back design allows extra wiring capacity
- No package quantity required
- Cover and Gasket set included
- Form 8 style

## Certifications and Compliances:

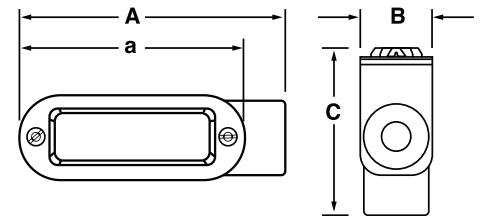
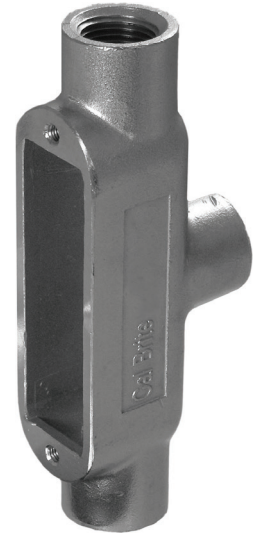
- UL 514A Listed
- UL File # E307133
- CSA C22.2 No. 18.1
- NSF/ANSI 169 Certified
- Intended for installation in accordance with Article 314 of ANSI/NFPA 70, National Electrical Code (NEC)
- Approved for wet locations

## Features:

- Body: 316SS
- Gasket: Neoprene
- Cover and Screws: 316SS

## Applications:

To connect and change direction of conduit runs. Can be used as pulling fittings. Accessible wiring chamber provides a spacious location to make splices.



Part Number	Trade Size (in)	A (in)	B (in)	C (in)	a (in)	Cubic Inches (in)	Weight per each (lb)
S60500TB00	½	5.994	1.350	2.847	4.320	5	1.25
S60700TB00	¾	6.538	1.550	3.215	4.950	9	1.98
S61000TB00	1	7.690	1.750	3.234	5.650	13	2.47
S61500TB00	1½	9.923	2.530	4.150	7.810	35	5.20
S62000TB00	2	12.554	3.500	4.500	10.000	77	8.40

All dimensions are for informational purposes only \*Tolerances +/- 5%

