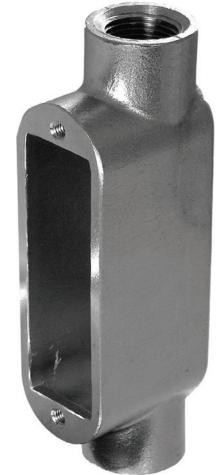


STAINLESS STEEL C CONDUIT BODIES

Features:

- Manufactured in type 316 stainless steel to meet any stringent sanitary condition
- Polished with standard “brite” finish to increase corrosion resistance and aesthetic appearance
- Solid stainless construction permits easy installation using ordinary hand tools
- The flat back design allows extra wiring capacity
- No package quantity required
- Cover and Gasket set included
- Form 8 style

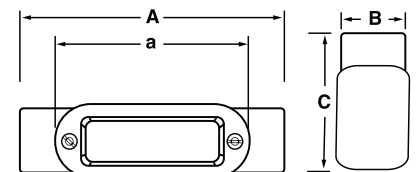


Certifications and Compliances:

- UL 514A Listed
- UL File # E307133
- CSA C22.2 No. 18.1
- NSF/ANSI 169 Certified
- Intended for installation in accordance with Article 314 of ANSI/NFPA 70, National Electrical Code (NEC)
- Approved for wet locations

Features:

- Body: 316SS
- Gasket: Neoprene
- Cover and Screws: 316SS



Applications:

To connect and change direction of conduit runs. Can be used as pulling fittings. Accessible wiring chamber provides a spacious location to make splices.



| Part Number | Trade Size (in) | A (in) | B (in) | C (in) | a (in) | Cubic Inches (in) | Weight per each (lb) |
|-------------|-----------------|--------|--------|--------|--------|-------------------|----------------------|
| S60500CE00 | ½ | 5.994 | 1.320 | 1.700 | 4.320 | 5 | 1.23 |
| S60700CE00 | ¾ | 6.538 | 1.550 | 1.975 | 4.950 | 9 | 1.75 |
| S61000CE00 | 1 | 7.690 | 1.750 | 2.225 | 5.650 | 13 | 2.46 |
| S61200CE00 | 1¼ | 8.695 | 2.170 | 2.630 | 6.530 | 24 | 3.64 |
| S61500CE00 | 1½ | 9.898 | 2.530 | 3.095 | 7.810 | 35 | 4.81 |
| S62000CE00 | 2 | 12.554 | 3.460 | 3.353 | 10.000 | 77 | 7.46 |

All dimensions are for informational purposes only *Tolerances +/- 5%

