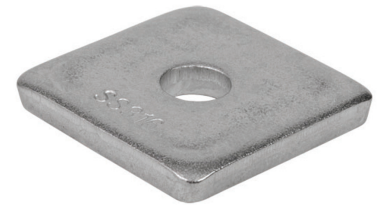


STAINLESS STEEL SQUARE WASHERS

Features:

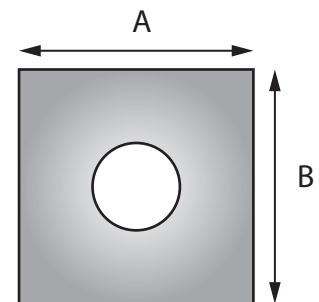
- Manufactured in type 316 stainless steel to meet any stringent sanitary condition
- Polished with standard “brite” finish to increase corrosion resistance and aesthetic appearance
- Designed for use with 1½” stainless steel strut
- No package quantity required



Applications:

Calbrite’s stainless steel Square Washers are designed for connecting stainless steel strut and a variety of stainless steel strut accessories.

Part Number	Trade Size (in)	A Width (in)	B Length (in)	Inside Diameter (in)	Thickness (in)	Weight per each (lb)
S60200SW00	¼	1.600	1.600	0.250	0.250	0.170
S60300SW00	⅜	1.600	1.600	0.375	0.250	0.160
S60500SW00	½	1.600	1.600	0.500	0.250	0.150
S60600SW00	⅝	1.600	1.600	0.625	0.250	0.140



All dimensions are for informational purposes only *Tolerances +/- 5%

