

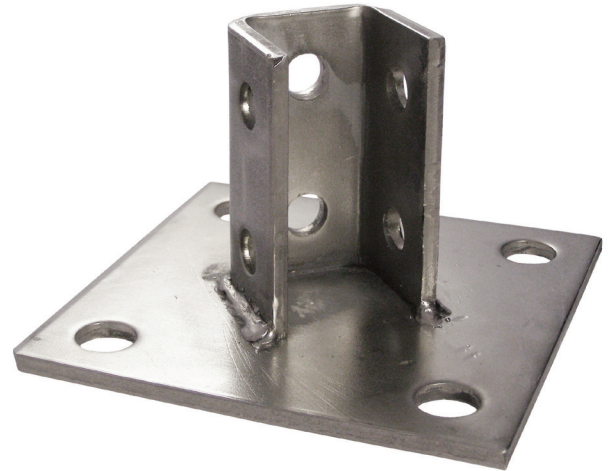
STAINLESS STEEL POST BASE FOR CHANNELS

Features:

- Manufactured in both type 304 and 316 stainless to meet any stringent sanitary condition
- Polished to a bright, easily maintainable finish that is modern, attractive, easy to clean, and that also enhances the surface's resistance to pitting and bacterial corrosion
- Fits 1½" Channel
- Calbrite stainless steel strut and fittings function in exactly the same way as any other metallic strut

Applications:

The Calbrite system of metal framing is based on the use of a continuous solid and slotted channel, and a series of brackets and fittings, which can be fastened to it any point. With Calbrite channel and components, racks, supports for conduit, wiring, and electrical equipment, machine frames, and a limitless variety of structures can be built rapidly, simply and economically.



Type 304 Part Number	Type 304 Part Number	Type 304 width each per (lb)	Type 316 width each per (lb)
S45800PB00	S65800PB00	3.56	3.27

All dimensions are for informational purposes only *Tolerances +/- 5%

