

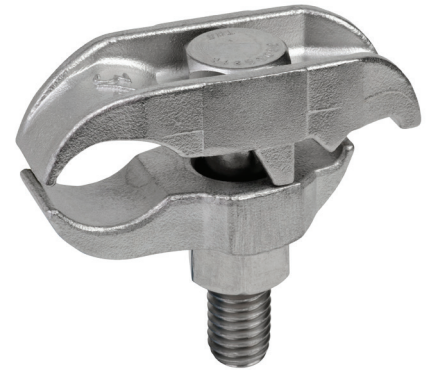
STAINLESS STEEL PARALLEL CLAMPS

Features:

- Manufactured in type 316 stainless steel to meet any stringent sanitary condition
- Polished with standard “brite” finish to increase corrosion resistance and aesthetic appearance
- Designed for use with stainless steel conduit
- Type 316 stainless steel nut and bolt included
- No package quantity required

Applications:

Used to attach the conduit run parallel to a beam or structural member.



Part Number	Trade Size (in)	Overall Length (in)	Overall Width (in)	Overall Height (in)	Weight per each (lb)
S60700PC00	¾	2.850	1.200	2.600	0.580
S61000PC00	1	3.050	1.200	2.800	0.620

All dimensions are for informational purposes only *Tolerances +/- 5%

