

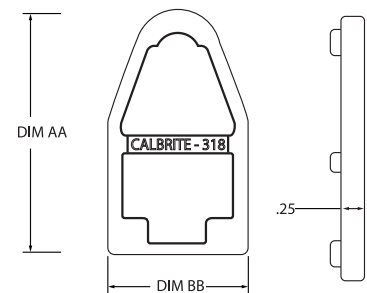
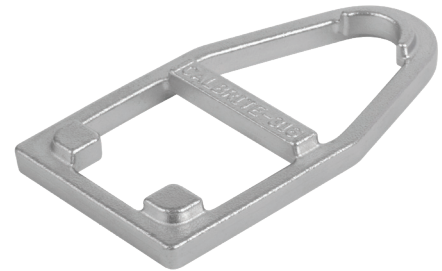
# STAINLESS STEEL CLAMP BACK SPACERS

## Features:

- Manufactured in type 316 stainless steel to meet any stringent sanitary condition
- Polished with standard “brite” finish to increase corrosion resistance and aesthetic appearance
- No package quantity required

## Applications:

The stainless steel one piece clamp backs and clamp back spacers provide spacing from the mounting surface when securing both cable and conduit.



## Clamp Back Spacers

Part Number	Trade Size (in)	AA (in)	BB (in)	Thickness (in)	Weight per each (lb)
S60510CBSP	1/2 - 1 (Universal)	2.500	1.310	0.250	0.080

All dimensions are for informational purposes only \*Tolerances +/- 5%

