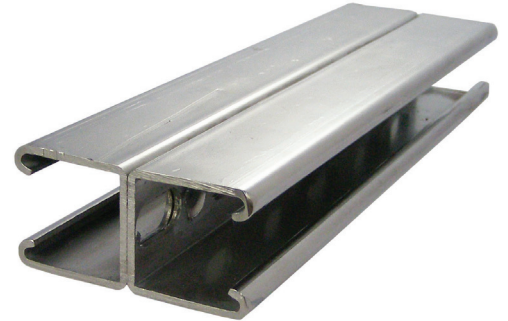


STAINLESS STEEL 1 5/8" BACK TO BACK SOLID & SLOTTED STRUTS

Features:

- Manufactured in both type 304 and 316 stainless to meet any stringent sanitary condition
- Polished to a bright, easily maintainable finish that is modern, attractive, easy to clean, and that also enhances the surface's resistance to pitting and bacterial corrosion
- Calbrite stainless steel strut functions in exactly the same way as any other metallic strut
- Channels provided by Calbrite are available in 12 different basic sizes which are subjected to further variation in gauge and depth



Certifications and Compliances:

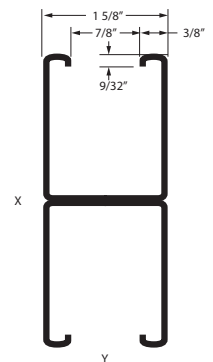
- UL 5B Listed
- For installation in accordance with Article 384 of ANSI/NFPA 70, National Electrical Code (NEC)

Applications:

The Calbrite system of metal framing is based on the use of a continuous solid or slotted channel, and a series of brackets and fittings, which can be fastened to it any point. With Calbrite channel and components, racks, supports for conduit, wiring, electrical equipment, machine frames, and a limitless variety of structures can be built rapidly, simply and economically.



Type 304 Part Number Slotted	Type 316 Part Number Slotted	Size (in)	Overall Height (in)	Sectional Area (in)	Weight each per L.F. (lb)
S45810SB58	S65810SB58	1 5/8"	3 1/4"	1.118	3.40
Type 304 Part Number Solid	Type 316 Part Number Solid	Size (in)	Overall Height (in)	Sectional Area (in)	Weight each per L.F. (lb)
S45810SBL5	S65810SBL5	1 5/8"	3 1/4"	1.118	3.80



All dimensions are for informational purposes only *Tolerances +/- 5%

