

# STAINLESS STEEL THREADED COUPLINGS

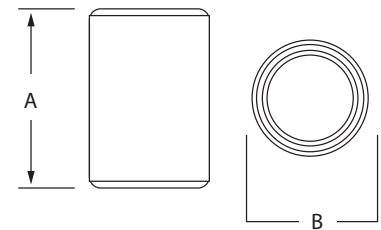
## Features:

- Manufactured in type 304 and 316 stainless steel to meet any stringent sanitary condition
- Polished with standard “brite” finish to increase corrosion resistance and aesthetic appearance
- Included with each length of stainless threaded conduit
- Straight threads–NPS
- No package qty. required



## Certifications and Compliances:

- UL / cUL 6A Listed
- UL file Number \_ E230584
- Manufactured in accordance with CSA C22.1, Canadian Electrical Code, Part 1, NOM-001-SEDE, Standard for Electrical Installations, Inclusive for installation in accordance with Article 344 of ANSI/NFPA 70, “National Electrical Code” (NEC)



## Applications:

Designed for use with stainless steel threaded conduit, and to connect threaded stainless conduit, nipples and other threaded fittings.

Part Number	Trade Size (in)	A (in)	B (in)	I.D. (in)	Wall Thickness (in)	Weight each per (lbs)
S60500CP00	1/2	1.650	1.030	0.840	0.110	0.130
S60700CP00	3/4	1.670	1.325	1.050	0.140	0.240
S61000CP00	1	2.000	1.585	1.315	0.160	0.370
S61200CP00	1 1/4	2.060	1.950	1.660	0.160	0.430
S61500CP00	1 1/2	2.090	2.210	1.900	0.200	0.650
S62000CP00	2	2.160	2.700	2.375	0.200	0.850
S62500CP00	2 1/2	3.220	3.280	2.875	0.250	1.940
S63000CP00	3	3.330	3.870	3.500	0.250	2.250
S64000CP00	4	3.550	5.000	4.500	0.250	4.000
S65000CP00	5	3.980	6.250	5.563	0.440	7.850
S66000CP00	6	4.250	7.320	6.625	0.440	9.500

All dimensions are for informational purposes only \*Tolerances +/- 5%



For more info visit [atkore.com/calbrite](http://atkore.com/calbrite)

