

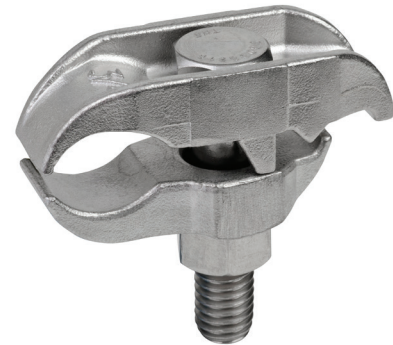
# STAINLESS STEEL PARALLEL CLAMP

## Features:

- Manufactured in type 316 stainless steel to meet any stringent sanitary condition
- Polished with standard “brite” finish to increase corrosion resistance and aesthetic appearance
- Designed for use with stainless steel conduit
- Type 316 stainless steel nut and bolt included
- No package qty. required

## Applications:

Used to attach the conduit run parallel to a beam or structural member.



## Industries Commonly Served:

- Food & Beverage Production & Distribution
- Chemical Plants
- Water & Wastewater Treatment
- Pharmaceuticals & Cosmetics
- Refining & Extraction Sites
- Petrochemical Operations
- Petrochemical
- Pulp & Paper Mills
- Marine & Coastal Facilities

Part Number	Size (in)	Overall Length (in)	Overall Width (in)	Overall Height (in)	Weight (ea.) per (lb)
S60700PC00	¾	2.850	1.200	2.600	0.580
S61000PC00	1	3.050	1.200	2.800	0.620

All dimensions are for informational purposes only \*Tolerances +/- 5%



For more info visit [atkore.com/calbrite](http://atkore.com/calbrite)

