

# STAINLESS STEEL GUAT CONDUIT OUTLET BOX WITH COVER

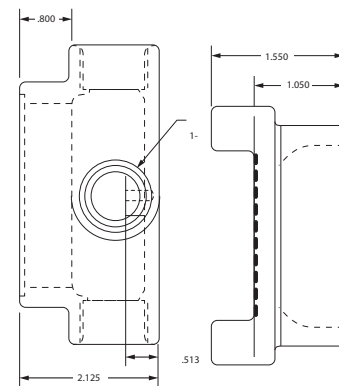
## Features:

- Manufactured in type 316 stainless steel to meet any stringent sanitary condition
- Polished with standard “brite” finish to increase corrosion resistance and aesthetic appearance
- Explosion proof, dust-ignition proof
- Designed for use with stainless steel threaded conduit
- Machined tapered female threads for smooth bore inside diameter
- Tightening “Ears” cast into cover to allow for easy tightening and removal
- Grounding screw provided
- Neoprene O-ring included
- No package qty. required



## Certifications and Compliances:

- UL 1203 Listed
- CSA C22.2 Listed
- UL file number - E468171
- Suitable for use in Class I, Div 1&2, Groups A,B,C &D  
Class II, Div 1, Groups E,F &G  
Class II, Div 2, Groups F &G  
Class III



## Applications:

Calbrite’s stainless steel GUAT conduit outlet boxes are designed for use in hazardous areas and harsh environments to act as pull and splice boxes, to join and connect conduit and/or other conduit fittings, allow for changes in conduit direction and easy access for maintenance and future system changes or upgrades.

Part Number	Size (in)	Overall Length (in)	Overall Width (in)	Overall Height (in)	Weight each per (lbs)
S60700GUAT	¾	4.750	4.200	3.020	3.600
S61000GUAT	1	5.080	4.350	3.100	3.820

All dimensions are for informational purposes only \*Tolerances +/- 5%



For more info visit [atkore.com/calbrite](http://atkore.com/calbrite)

