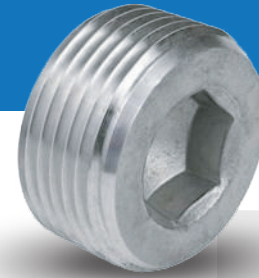


# Calbrite™

A PART OF **atkore**  
INTERNATIONAL



## STAINLESS STEEL COUNTER-SUNK HEX HEAD PLUG

### Features:

- Manufactured in type 316 stainless steel to meet any stringent sanitary condition
- Polished with standard "brite" finish to increase corrosion resistance and aesthetic appearance
- No package qty. required

### Certifications and Compliances:

Manufactured in strict accordance to blue print, industry standards, NEC Compliance, and pertinent requirements issued by Calpipe Industries.



### Applications:

To plug or close outlets on conduit fittings, and to dead end conduit runs with use of couplings.

### Industries Commonly Served:

- Food & Beverage Production & Distribution
- Chemical Plants
- Water & Wastewater Treatment
- Pharmaceuticals & Cosmetics
- Refining & Extraction Sites
- Petrochemical
- Pulp & Paper Mills
- Marine & Coastal Facilities

Part Number	Trade Size	A (Allen Wrench / Hex Key)	B	C	O.D	Weight (ea) per lb.
S60500CSHP	1/2"	3/8"	.540"	.150"	0.840"	0.06
S60700CSHP	3/4"	9/16"	.540"	.150"	1.050"	0.09
S61000CSHP	1"	5/8"	.690"	.220"	1.315"	0.19
S61200CSHP	1-1/4"	3/4"	.700"	.350"	1.660"	0.31
S61500CSHP	1-1/2"	1"	.810"	.350"	1.900"	0.46
S62000CSHP	2"	1"	.880"	.590"	2.375"	0.88
S62500CSHP	2-1/2"	1"	1.165"	.750"	2.875"	1.82
S63000CSHP	3"	1"	1.180"	1.180"	3.500"	2.87
S64000CSHP	4"	1"	1.180"	1.650"	4.500"	4.72

*All dimensions are for informational purposes only \*Tolerances +/- 5%*