

STAINLESS STEEL THREADED COUPLINGS

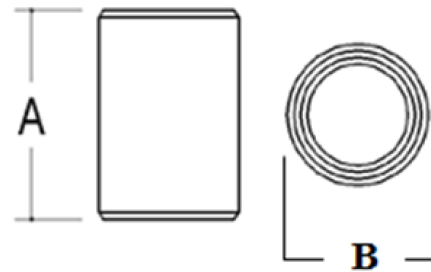


Features:

- Manufactured in type 304 and 316 stainless steel to meet any stringent sanitary condition
- Polished with standard "brite" finish to increase corrosion resistance and aesthetic appearance
- Included with each length of stainless threaded conduit
- Straight threads—NPS
- No package qty. required

Certifications and Compliances:

- UL / cUL 6A Listed
- UL file number – E230584
- Manufactured in accordance with CSA C22.1, Canadian Electrical Code, Part 1, NOM-001-SEDE, Standard for Electrical Installations, Inclusive for installation in accordance with Article 344 of ANSI/NFPA 70, "National Electrical Code" (NEC)



Applications:

Designed for use with stainless steel threaded conduit, and to connect threaded stainless conduit, nipples and other threaded fittings.

Industries Commonly Served:

- Food & Beverage Production
- Marine & Coastal Facilities
- Chemical Plants
- Water & Wastewater Treatment
- Pharmaceuticals & Cosmetics
- Refining & Extraction Sites
- Petrochemical Operations
- Pulp & Paper Mills
- Along with other corrosive environments

Part Number	Size	A	B	I.D	Wall Thickness	Weight each per lb
S60500CP00	1/2"	1.650"	1.030"	0.840"	.110"	0.13
S60700CP00	3/4"	1.670"	1.325"	1.050"	.140"	0.24
S61000CP00	1"	2.000"	1.585"	1.315"	.160"	0.37
S61200CP00	1-1/4"	2.060"	1.950"	1.660"	.160"	0.43
S61500CP00	1-1/2"	2.090"	2.210"	1.900"	.200"	0.65
S62000CP00	2"	2.160"	2.700"	2.375"	.200"	0.85
S62500CP00	2-1/2"	3.220"	3.280"	2.875"	.250"	1.94
S63000CP00	3"	3.330"	3.870"	3.500"	.250"	2.25
S64000CP00	4"	3.550"	5.000"	4.500"	.250"	4.00
S65000CP00	5"	3.980"	6.250"	5.563"	.440"	7.85
S66000CP00	6"	4.250"	7.320"	6.625"	.440"	9.50

All dimensions are for informational purposes only *Tolerances +/- 5%