



STAINLESS STEEL GROUNDING LOCKNUTS

Features:

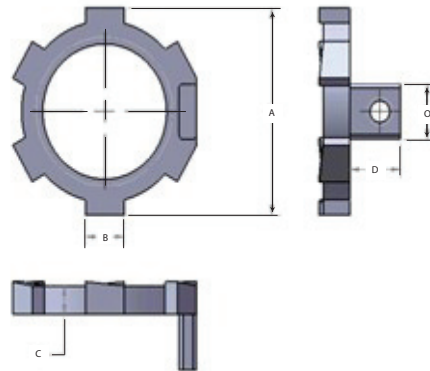
- Made from Type 316 stainless steel for increased corrosion resistance
- Polished with standard "brite" finish to increase corrosion resistance and aesthetic appearance
- Includes a SS316 grounding lug and screw
- No package qty. required

Certifications and Compliances:

- Manufactured to UL 514B standards
- All Locknuts are intended to be installed in accordance with ANSI/NFPA 70, "National Electrical Code" (NEC)

Applications:

Used to connect threaded conduit or connector to a threadless opening in a box.



Industries Commonly Served:

- Food & Beverage Production
- Marine & Coastal Facilities
- Chemical Plants
- Water & Wastewater Treatment
- Pharmaceuticals & Cosmetics
- Refining & Extraction Sites
- Petrochemical
- Pulp & Paper Mills
- Along with other corrosive environments

Part Number	Size	A	B	C	D	Weight each per lb.
S60500LNWG	1/2"	1.250"	.250"	.140"	.251"	0.02
S60700LNWG	3/4"	1.610"	.316"	.221"	.495"	0.08
S61000LNWG	1"	1.870"	.387"	.260"	.500"	0.10
S61200LNWG	1-1/4"	2.280"	.390"	.260"	.500"	0.12
S61500LNWG	1-1/2"	2.570"	.445"	.270"	.500"	0.16
S62000LNWG	2"	3.100"	.612"	.280"	.505"	0.22
S62500LNWG	2-1/2"	3.630"	.654"	.375"	.625"	0.36
S63000LNWG	3"	4.320"	.690"	.375"	.625"	0.46
S64000LNWG	4"	5.380"	.765"	.440"	.630"	0.66

*All dimensions are for informational purposes only *Tolerances +/- 5%*