

# Calbrite™

## Stainless Steel Conduit Systems

### Stainless Steel U-Bolts

#### Features:

- Manufactured in type 316 stainless steel for increased corrosion resistance
- Polished with standard "brite" finish to increase corrosion resistance and aesthetic appearance
- Figure 137 style
- Two type 316 stainless steel hex nuts included
- No package qty. required



#### Certifications and Compliances:

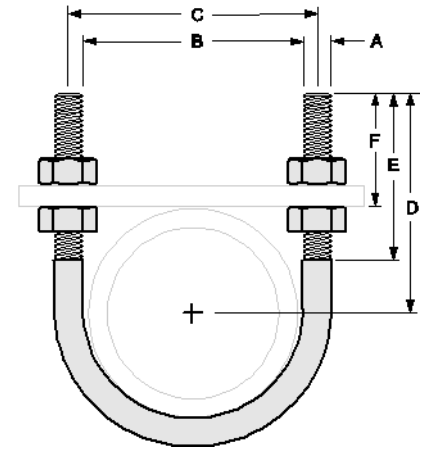
Calbrite stainless steel U-Bolts are fabricated to UL & ASTM F593 standards.

#### Applications:

Used to mount & secure electrical conduit.

#### Industries Commonly Served:

- Food & Beverage Production & Distribution
- Chemical Plants
- Water & Wastewater Treatment
- Pharmaceuticals & Cosmetics
- Refining & Extraction Sites
- Petrochemical Operations
- Marine & Coastal Facilities
- Pulp and Paper Mills
- Along with other corrosive environments



Size	Part Number	A	B	C	D	E	F	Weight per 100 (lb.)
1/2"	S60500UB00	1/4"	15/16"	1-3/16"	2-3/4"	2-1/8"	2-5/16"	23
3/4"	S60700UB00	1/4"	1-1/8"	1-3/8"	2-3/4"	2-1/8"	2-7/32"	24
1"	S61000UB00	1/4"	1-3/8"	1-5/8"	2-3/4"	2-1/8"	2-3/32"	26
1-1/4"	S61200UB00	3/8"	1-11/16"	2-1/16"	2-7/8"	2-1/8"	2-1/32"	28
1-1/2"	S61500UB00	3/8"	2"	2-3/8"	3"	2-1/2"	2-1/16"	29
2"	S62000UB00	3/8"	2-7/16"	2-13/16"	3-1/4"	2-1/2"	2-1/16"	32
2-1/2"	S62500UB00	1/2"	2-15/16"	3-7/16"	3-3/4"	3"	2-1/4"	68
3"	S63000UB00	1/2"	3-9/16"	4-1/16"	4"	3"	2-1/4"	77
3-1/2"	S63500UB00	1/2"	4-1/16"	4-9/16"	4-1/4"	3"	2-1/4"	82
4"	S64000UB00	1/2"	4-9/16"	5-1/16"	4-1/2"	3"	2-1/4"	88

All dimensions are for informational purposes only \*Tolerances +/- 5%